



GAT MONTHLY MEMBERSHIP PROGRESS REPORT

Results as of: 10/31/2022

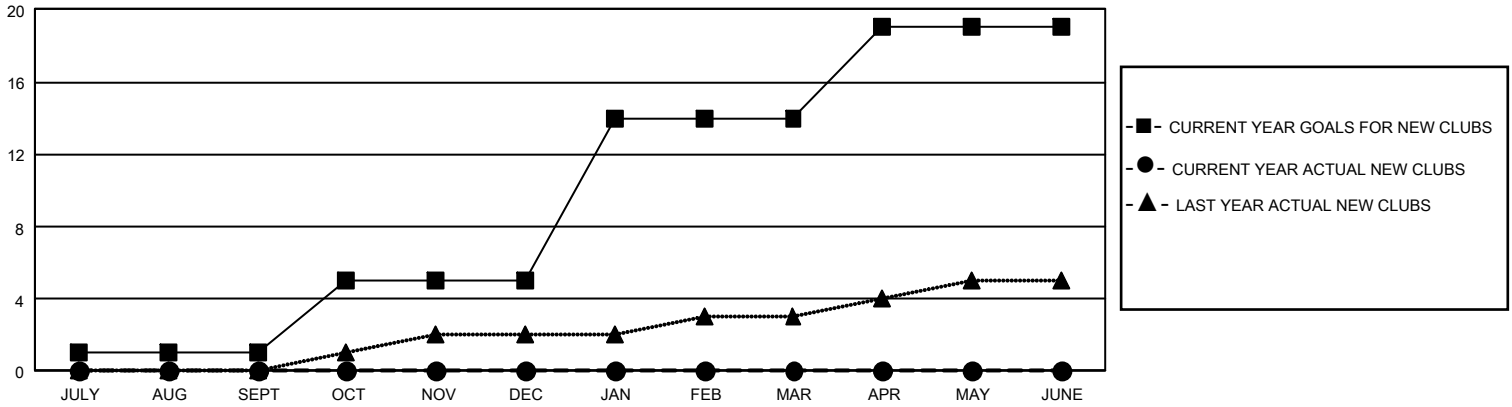
GMT Constitutional Area 3, Group G

REPORT DOES NOT INCLUDE CLUBS IN UNDISTRICTED AREAS.

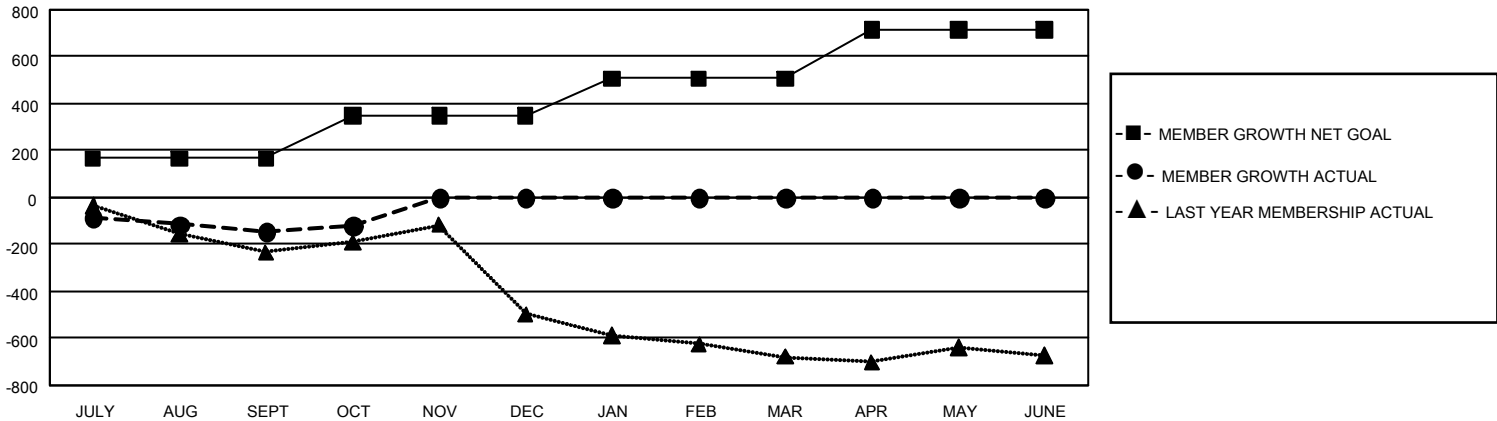
Clubs			
RESULTS FOR 2022-2023			
QUARTER	NEW CLUB GOAL	NEW CLUBS	DROPPED CLUBS
JULY/AUG/SEPT	3	0	6
OCT/NOV/DEC	12	0	2
JAN/FEB/MAR	27	0	0
APR/MAY/JUNE	15	0	0

Members			
RESULTS FOR 2022-2023			
QUARTER	MEMBER GROWTH NET GOAL	MEMBER GROWTH ACTUAL	DROPPED MEMBERS ACTUAL (including transfers)
JULY/AUG/SEPT	167	224	326
OCT/NOV/DEC	182	140	93
JAN/FEB/MAR	158	0	0
APR/MAY/JUNE	206	0	0

GOALS AND ACTUAL NEW CLUBS CUMULATIVE



GOALS AND ACTUAL MEMBERS CUMULATIVE



DROPPED CLUBS: 8	116 CLUBS OF 492 ADDED 1 OR MORE NEW MEMBERS	GENDER DISTRIBUTION	
		MALE 5,857 (53.55%) FEMALE 5,080 (46.44%) NON BINARY 0 (0.00%) PREFER NOT TO ANSWER 1 (0.01%)	
DROPPED MEMBERS		CLICK HERE FOR CUMULATIVE MEMBERSHIP DATA	TOTAL FAMILY UNIT MEMBERS 4,738
DECEASED 44 CLUB CANCELLED 8 OTHER 367 TOTAL 419			FAMILY MEMBERS PAYING HALF DUES 2,491